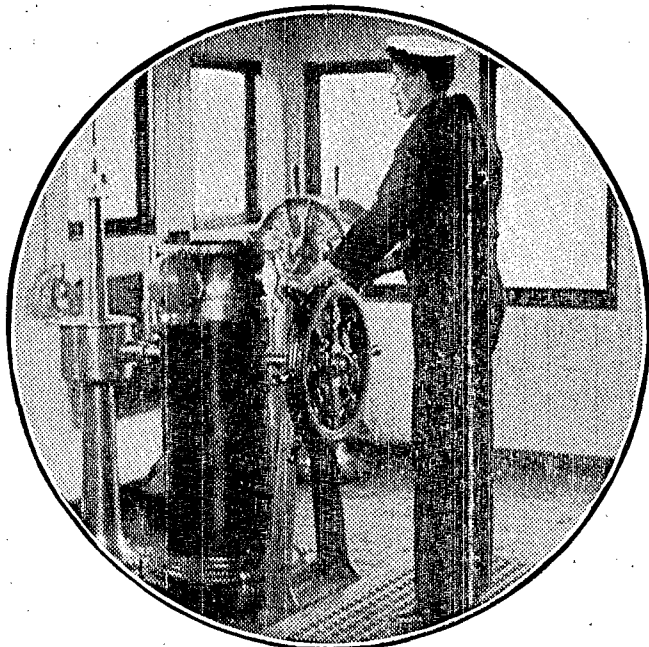


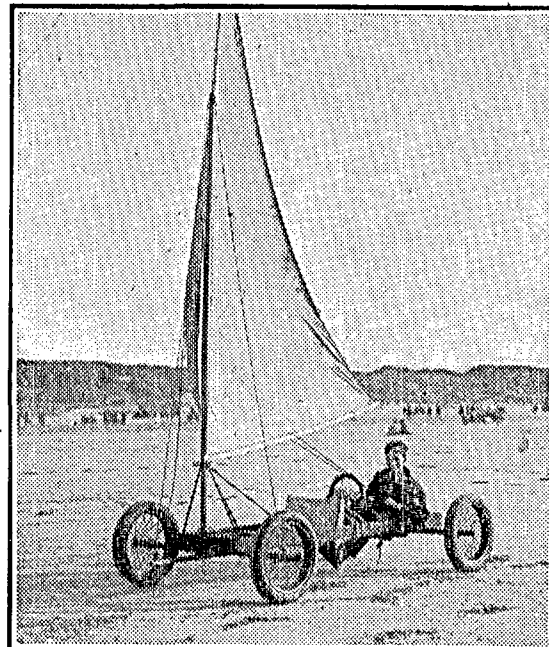
# THE MAN AT THE WHEEL ON LAND, AT SEA, AND IN THE AIR



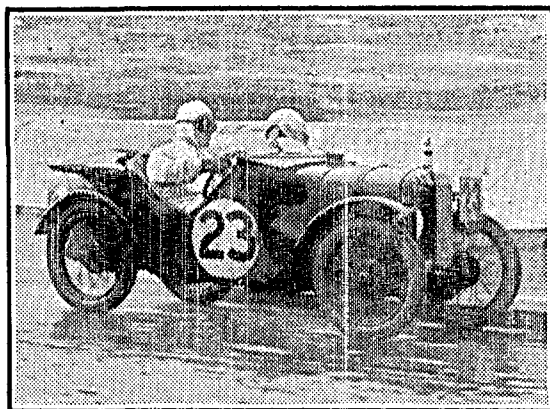
The river lock



The liner



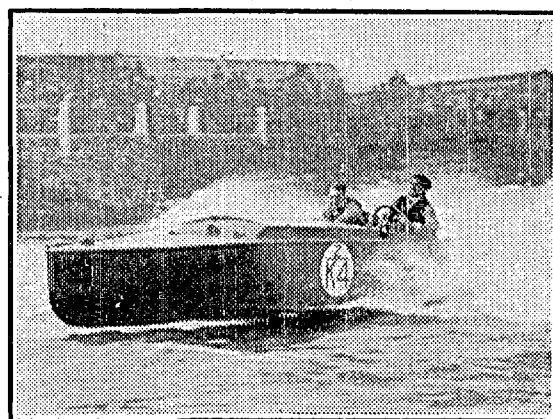
The sand yacht



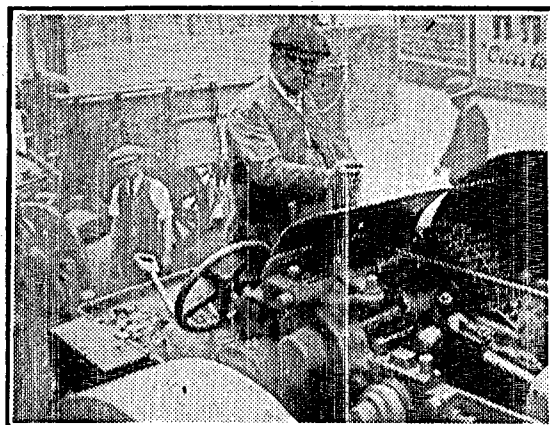
The racing motor-car



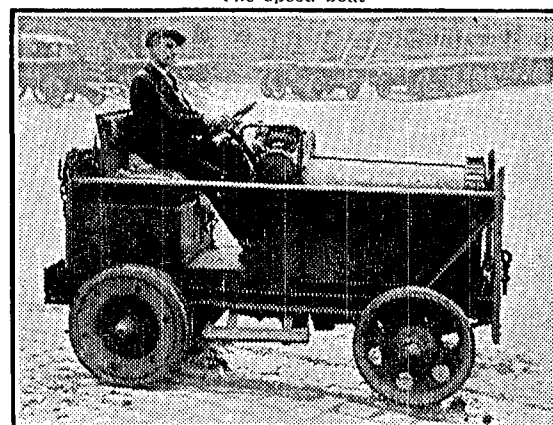
The yacht



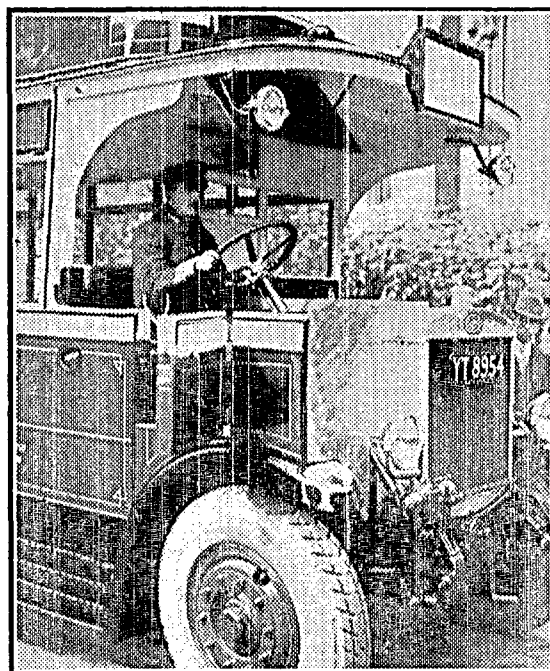
The speed boat



The steam-roller



The motor-tractor



The motor-bus



The motor-lorry



The airship

The man at the wheel has become an everyday expression for anyone in charge, for most mechanical devices, particularly in the realm of transport, are controlled by this most convenient means. Here are some pictures showing the man at the wheel, a character who plays an important part in this Machine Age on land, at sea, and in the air.