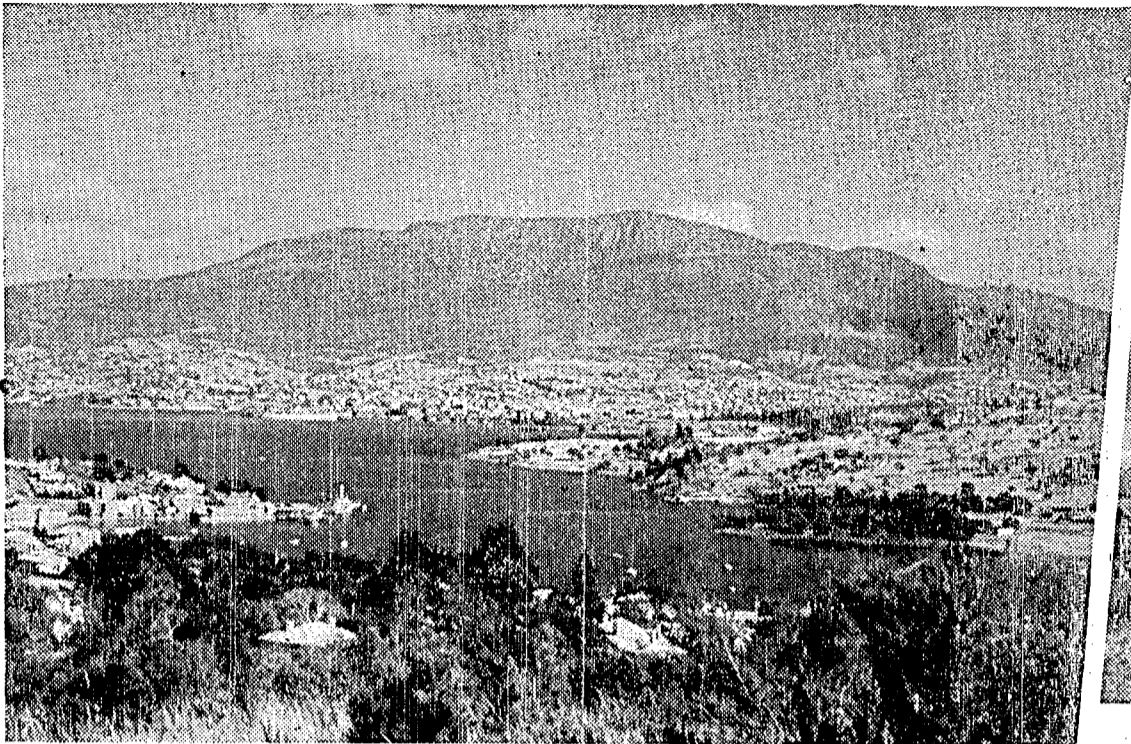
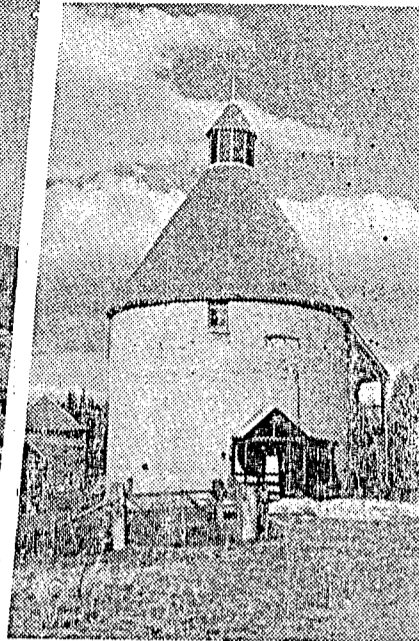


COMMONWEALTH PA



Hobart, on the Derwent River, with Mount Wellington beyond



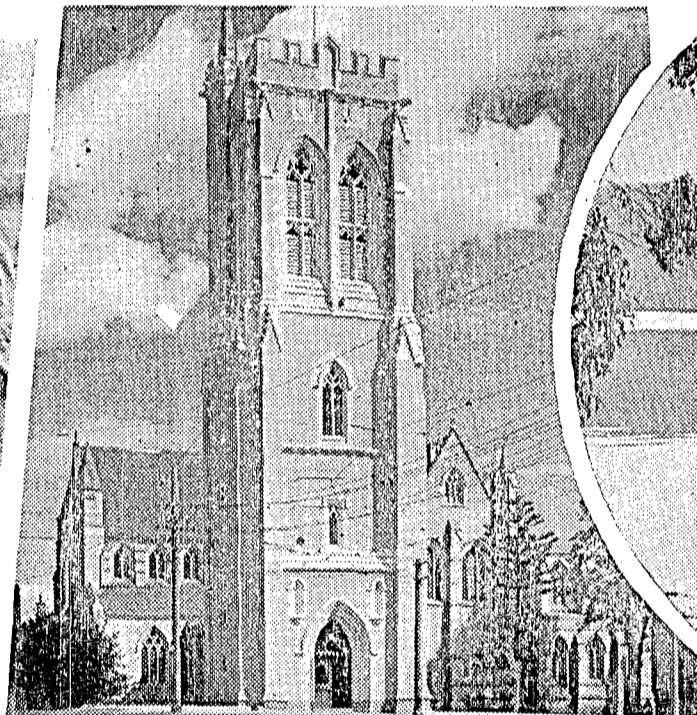
Hop kiln at New Norfolk

SMALLEST of Australia's six States, the island of Tasmania has an area of 26,215 square miles—roughly four-fifths the size of Ireland. The population numbers about 330,000, nearly all of British descent, and a third of them live in Hobart, the capital, which has one of the finest natural harbours in the world.

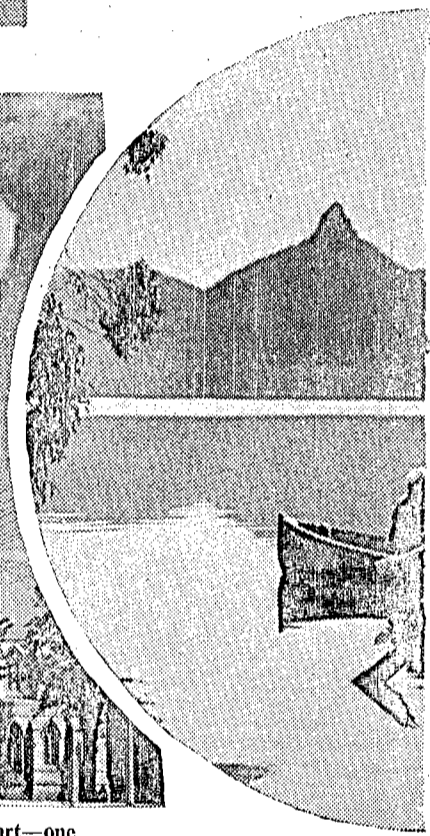
TASMANIA was discovered in 1642 by the Dutch mariner Abel Tasman, who called it Van Diemen's Land in honour of the Governor of the Netherlands East Indies. It was not found to be an island until 1798, when a Lincolnshire-born explorer, George Bass, sailed through the Strait separating it from the mainland. Five years later the first white settlement was established near Hobart by a party sent from New South Wales. More settlers fol-



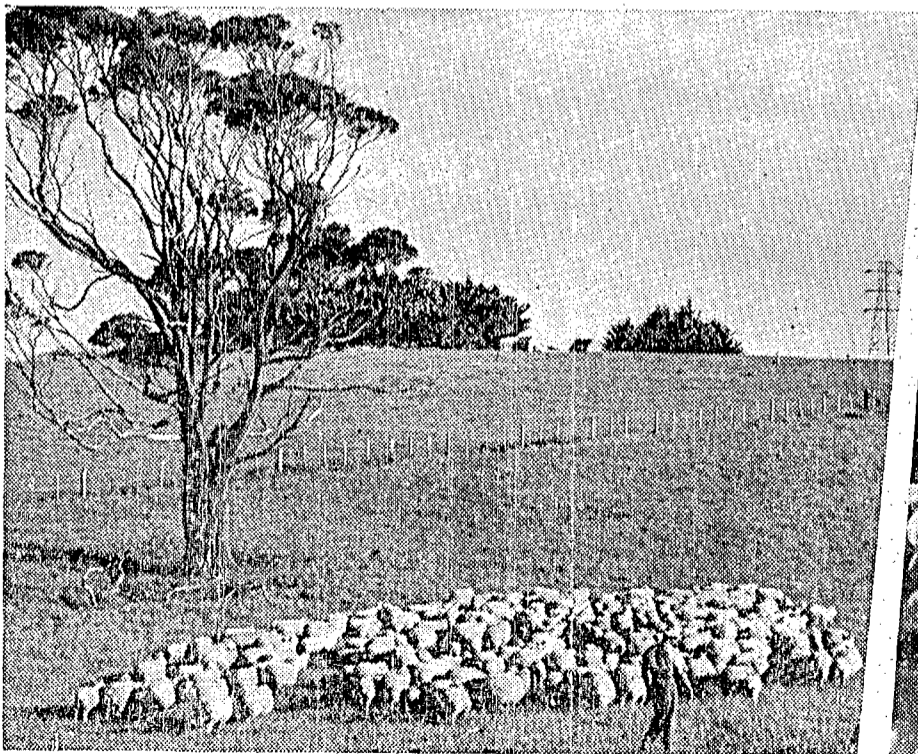
A District Agricultural Officer at a school explains the points of a dairy cow



The tall tower of St. David's Cathedral, Hobart—one of the many fine buildings of Tasmania's chief city



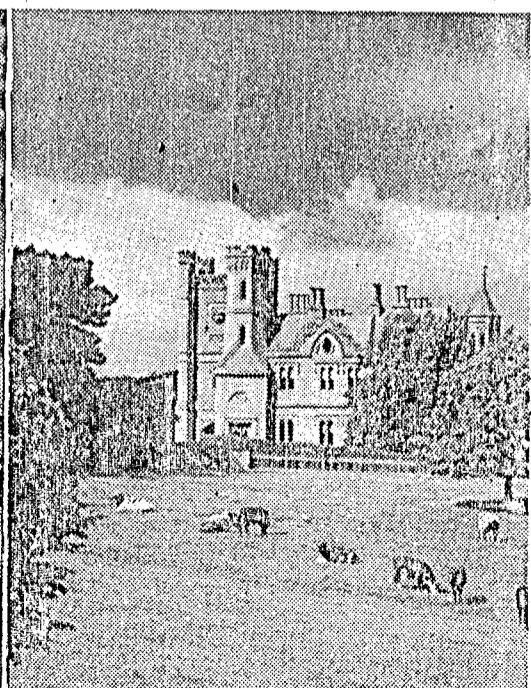
Lake St. Clair, in one



Sheep on the rolling pastures at Westbury, not far from Launceston



Emptying freshly-gathered apples into cases



Government House at Hobart, the Tasmania